

COMMERCIAL BUILDING FOR SALE

TRENT PROPERTIES GROUP



PROPERTY SUMMARY

LIST PRICE: \$495,000

BUILDING SF: 2,120 SF
MAIN: 1,258 SF
BASEMENT: 862 SF

LOT SIZE: 12,000 SF

ZONING: MX-L

YEAR BUILT: 1951

2025 TAXES: \$3,518

5 SWOPE AVE COLORADO SPRINGS, CO 80909

FEATURES

The main floor is a comfortable and flowing 1,258-square-foot office space with reception/front office, conference room, three large offices, and bathroom. The 862-square-foot basement is framed out and ready for finishing. Front and back fully paved and fenced providing plenty of parking or equipment storage. Centrally located close to Memorial Park, Downtown, and Highway 24.



TRENT PROPERTIES GROUP

2115 W COLORADO AVE
COLORADO SPRINGS, CO 80904
TrentPropertiesGroup.com

JERRY TRENT
719.338.1309
jerry@mrjerrytrent.com

AMANDA M LUCIANO
719.650.9913
amanda@TrentPropertiesGroup.com

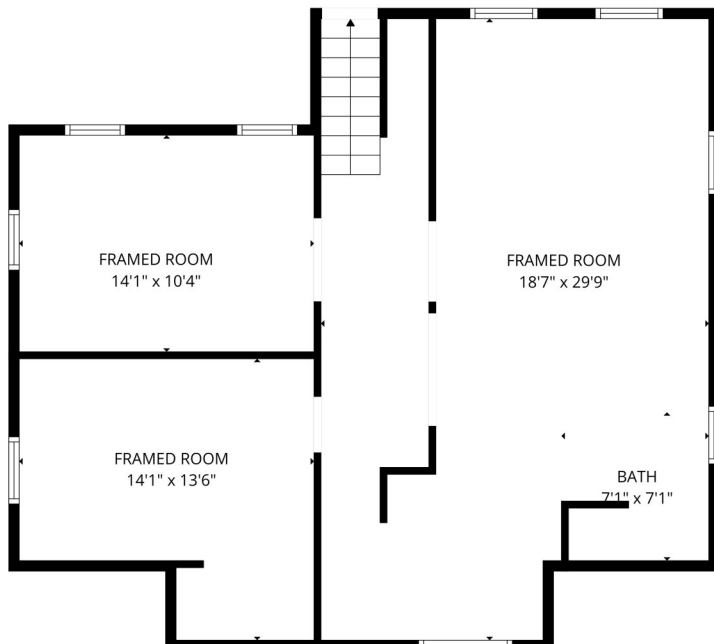
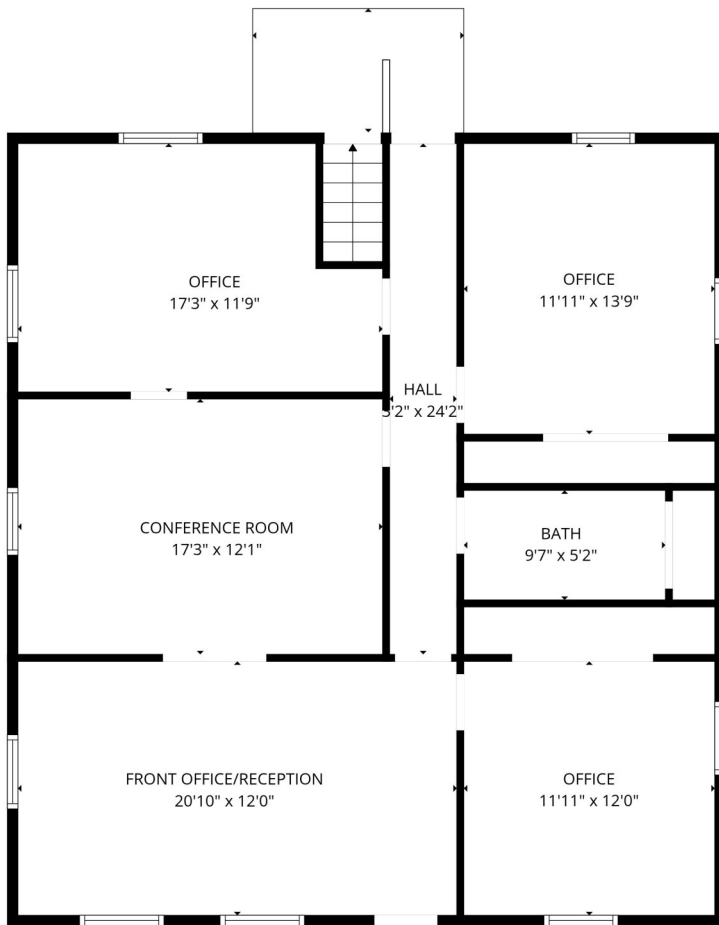
DEANNE WALKER
719.237.9425
dwalker@TrentPropertiesGroup.com

All information is from sources deemed reliable and is subject to errors, omissions, change of price, rental, prior sale and withdrawal without notice. PROSPECTS SHOULD CAREFULLY VERIFY EACH ITEM OF INFORMATION CONTAINED HEREIN.

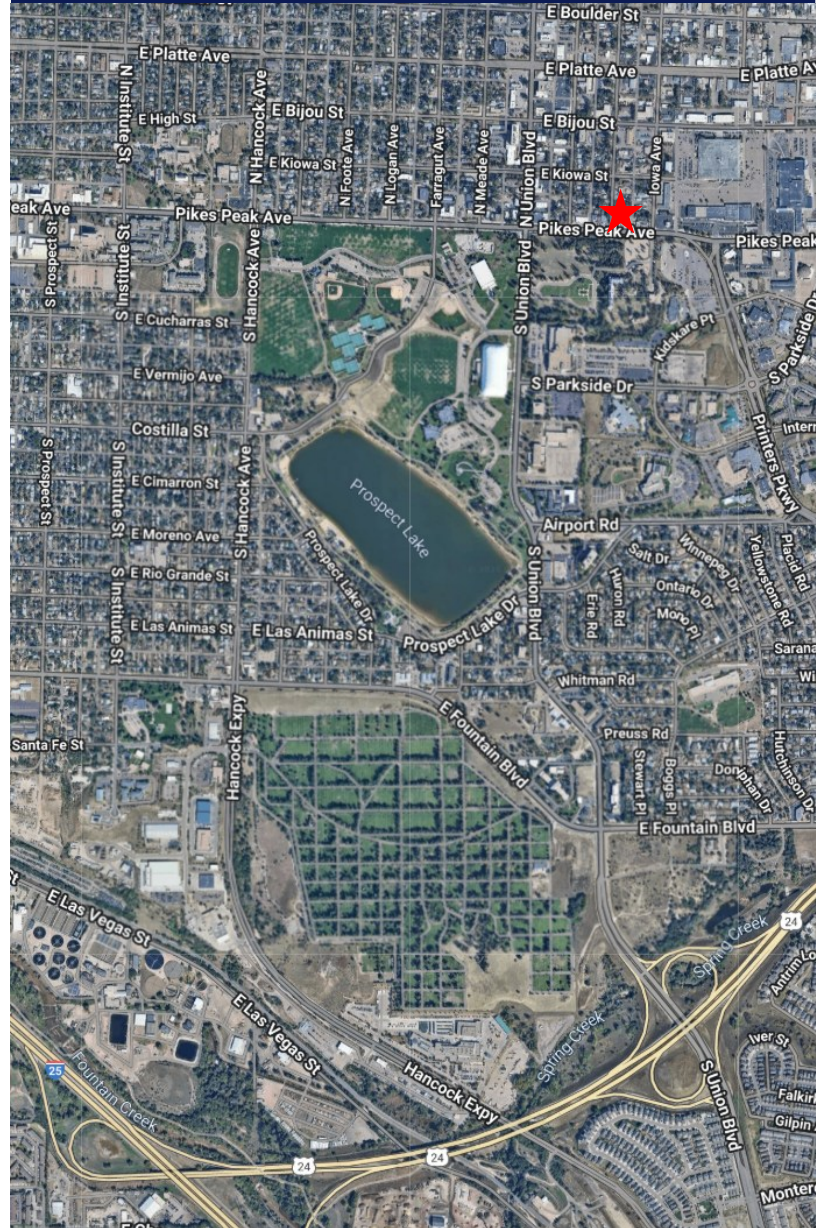
5 SWOPE AVE

COLORADO SPRINGS, CO 80909

TRENT PROPERTIES GROUP



FLOOR PLAN CREATED BY CUBICASA APP. MEASUREMENTS DEEMED HIGHLY RELIABLE BUT NOT GUARANTEED.



TRENT PROPERTIES GROUP

2115 W COLORADO AVE
COLORADO SPRINGS, CO 80904

TrentPropertiesGroup.com