

FOR SALE DOWNTOWN WAREHOUSE

TRENT PROPERTIES GROUP



BUILDING

3,000 SF

BUILT: 1980

LAND

5,000 SF

MX-M Zoning

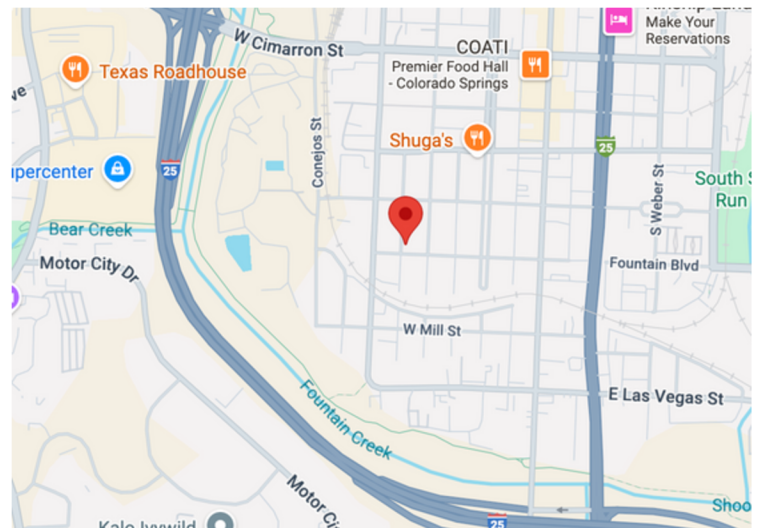
TAXES

2024: \$5,820

PRICE

\$600,000

114 W FOUNTAIN BLVD.
COLORADO SPRINGS, COLORADO 80903



This downtown warehouse boasts 16-foot ceilings, and two large drive-in doors. There is a small mezzanin, office space, and ample power. Sellers installed a new heater in 2025.

TRENT PROPERTIES GROUP

2115 W COLORADO AVE

COLORADO SPRINGS, CO 80904

TrentPropertiesGroup.com

Amanda Miller Luciano

Amanda@TrentPropertiesGroup.com

719.650.9913

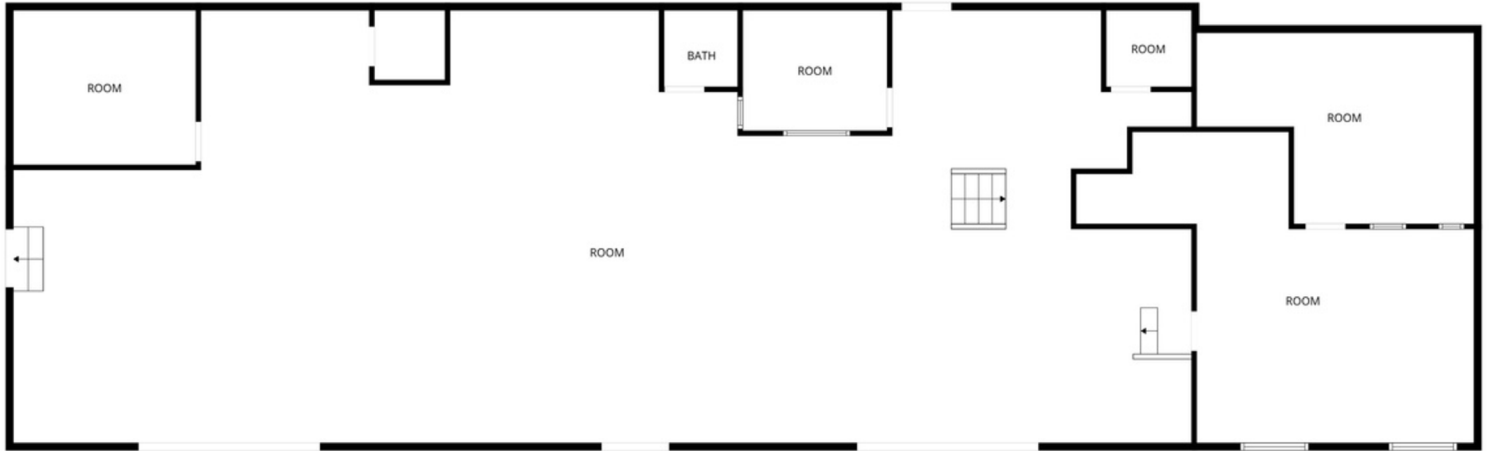


All information is from sources deemed reliable and is subject to errors, omissions, change of price, rental, prior sale and withdrawal without notice. PROSPECTS SHOULD CAREFULLY VERIFY EACH ITEM OF INFORMATION CONTAINED HEREIN.

FOR SALE DOWNTOWN WAREHOUSE

TRENT PROPERTIES GROUP

114 W FOUNTAIN BLVD. COLORADO SPRINGS, CO 80903



COMBINE WITH NEIGHBOR

114 W Fountain can be combined with 110 W Fountain Blvd., pictured above. The 14,000 SF lot includes a 938-SF building with a drive-in door and bathroom.

There is a curb cut into the mostly fenced yard.

Offered at an additional
\$600,000.

RARE DOWNTOWN OPPORTUNITY

Properties like this are rare. This solid, concrete block building offers a functional home for any business needing drive-in doors, ample power and good clear height.

But the location cannot be beat. This property is located within easy distance of I-25, just outside of the Downtown Form-Based Zone. It's in an Opportunity Zone, Enterprise Zone, and Hub Zone.

There is tremendous appreciation potential in this area in the future, there is extraordinary opportunity for business here NOW.

TRENT PROPERTIES GROUP

2115 W COLORADO AVE

COLORADO SPRINGS, CO 80904

TrentPropertiesGroup.com

AMANDA MILLER LUCIANO

Amanda@TrentPropertiesGroup.com

719.650.9913



All information is from sources deemed reliable and is subject to errors, omissions, change of price, rental, prior sale and withdrawal without notice. PROSPECTS SHOULD CAREFULLY VERIFY EACH ITEM OF INFORMATION CONTAINED HEREIN.